

RESTRICTED

The information given in this document is not to be communicated, either directly or indirectly, to the Press or to any person not authorized to receive it.

W.O. Code No. 5617

(Includes Amends 1-9 incl)

57
SIGS
4641

IDENTIFICATION LIST
FOR
WIRELESS SETS No. 62
MARKS 1 & 2^a3

[No. E.S. 1360/I.L. DECEMBER, 1949]

TO BE USED IN CONJUNCTION WITH ~~E.S. 1740/1.P.P.L.~~ AND ~~E.S. 1740/2.P.P.L.~~

ES 1740 I.L. W.O. Code No 6859

~~(Code 3090)~~~~(Code 3090)~~

By Command of the Army Council

G. W. Summer.

The War Office
20th June, 1950

RESTRICTED

I.E.M.E. Authoritative List

PREFACE

1. This list has been prepared for the purpose of identifying any component Part or assembly of Parts. All concerned will use the designations given in this list when demanding Spare Parts from Ordnance or when referring in correspondence to any Part of the Equipment.
2. The Catalogue or Part Numbers quoted in this list will supersede any other Catalogue or Part Numbers that may have been allotted previously.
3. When demanding Spare Parts the following particulars must be quoted:—
Catalogue or Part Number, Designation of Part and Designation of the Equipment for which the part is required.
4. For interpretation of any marginal signs appearing in this list, reference should be made to the appendix
5. Alternatives quoted apply only to the equipments covered by this list and it must not be assumed that they may apply to other equipments.
6. Abbreviations and symbols appearing in this list are generally in accordance with those accepted and recognised by the British Standards Institution. Where deviation has been made, such cases are enumerated in the appendix on the last page.
7. Amendments to this list will be notified in A.C.I.s. Units concerned will indent through the appropriate D.D.O.S. (Printing and Stationery Section) for copies as required. It is essential that this list should be carefully amended and the date of each amendment entered in the space below.

Amend 1	July 52	Amend 7	March 55			
-u- 2	Oct 52	-u- 8	Oct 55			
-u- 3	Jan 53	-u- 9	June 56			
-u- 4	May 53					
-u- 5	Feb 54					
-u- 6	Nov 54					

8. Any errors or omissions should be notified to the Chief Inspector of Electrical and Mechanical Equipment.

READ PREFACE BEFORE DEMANDING SPARES

I.E.M.E. IDENTIFICATION LIST No. E.S 1360 I.L.

FOR:- WIRELESS SETS No.62, MK.1 and MK.2

* 2B - AZB Z1/ZA 30504 AERIAL BASES, No.23 1 -
(This is a station list item, and includes item 51B)

ITEM No.	%	HOLDING SECTION AND CATALOGUE No.	DESIGNATION	ILLUS. No.	SCH. REF.	No. OFF
1		Z1/ZA.26554	WIRELESS SETS, No.62, Mk.1	C.I.E.M.E S.3050/2, 3 & 4	C.I.E.M.E diagram 4462/SH 1 & 2	
2		Z1/ZA.30714	WIRELESS SETS, No.62, Mk.2			
2A		Z1/ZA	WIRELESS SETS No.62 MK3 56370			
* 3	%	Z1/ZA.30156	BASES, screening can, No.1A	B3	-	2
4	%	Z1/ZA.21524	BELTS, waist, No.2 (Used on Mk.1 equipments only)	-	-	1
5	%	Z1/ZA.30155	BODIES, screening can, No.1A	B5	-	2
6	%	Z1/ZA.27917	BRACES, L.H., No.2 (Used on Mk.1 equipments only)	A7	-	1
7	%	Z1/ZA.31076	BRACES, L.H., No.3 (Used on Mk.2 equipments)	A7	-	1
8	%	Z1/ZA.27916	BRACES, R.H., No.2 (Used on Mk.1 equipments only)	A9	-	1
9	%	Z1/ZA.31077	BRACES, R.H., No.3 (Used on Mk.2 equipments)	A9	-	1
10		Z1/ZA.30081	BRACKETS, chassis supporting, No.1	B10	-	2
11	%	Z1/ZA.30085	BRACKETS, handle, No.1	A11	-	2
12	%	Z1/ZA.30086	BRACKETS, handle, No.2	A12	-	2
13		Z1/ZA.30088	BRACKETS, index, No.1	A13	-	2
# 14		Z1/ZA.30078	BRACKETS, metal, 3/4-in. x 5/8-in. x 3/8-in., No.1 (For fixing base cover to chassis)	-	-	2
15		Z1/ZA.30083	BRACKETS, supporting, L.H., No.2	B15	-	1
16		Z1/ZA.30082	BRACKETS, supporting, R.H., No.2	B16	-	1
17	%	Z1/ZA.30158	BUFFERS, valveholder, No.1 (Used with Valve V10)	-	-	2
17A		Z1/ZA.16493	BUSHES, bearing, No.8 (Behind item 108)	-	-	1
17B		Z1/ZA.14670	BUSHES, insulating, 0.055-in. I.D. x 1/2-in. O.D., x 1.1/8-in. long, No.1 (Through chassis, below item 41)	-	-	1
18		Z1/ZA.30248	CABLE-GUIDES, metal, 2-in. x 9/16-in. x 3/8-in. dia. hole, No.1	C18	-	2
19	%	Z1/ZA.20966	CAPACITORS, elect., ins., tub., 8-uF., + 50 - 20%, 375-V., D.C.wkg., No.2	C19	C23A	1
20	%	Z/Z.145010	CAPACITORS, elect., met., tub., 2-uF., + 50 - 20%, 350-V., D.C.wkg., No.3	C20A	C22A	2
21	%	Z/Z.145278	CAPACITORS, elect., met., tub., 8-uF., + 100 - 20%, 150-V., D.C.wkg., No.1	C20B	C22B	1
22	%	Z1/ZA.20973	CAPACITORS, elect., met., tub., 100-uF., + 50 - 20%, 6-V., D.C.wkg., No.1	C21	C24A	1
23	%	Z/Z.123456	CAPACITORS, mlded. mica, sthd. foil, 500-pF., ± 20%, 350-V., D.C.wkg., No.2	C22	C21A	1
24	%	Z1/ZA.32761	CAPACITORS, pap., met., tub., 0.005-uF., ± 20%, 1,000-V., D.C.wkg., No.1	C23A	C18A	2
25		Z1/ZA.34876	CAPACITORS, pap., met., tub., 0.03-uF., ± 15%, 500-V., D.C.wkg., No.1	C23B	C18B	4
26	%	Z1/ZA.2008	CAPACITORS, semi-fixed, 80-pF., max., No.1	B24A	C5A	1
27	%	Z3/ZG.19310	CAPACITORS, silvd., ceramic tub., 10-pF., ± 10%, 500-V., D.C.wkg., No.3 (C33A is used on Mk.1, with serial numbers over 1,800 and on Mk.2)	C24B	C5B	2
28	%	Z/Z.132280	CAPACITORS, silvd., ceramic tub., 27-pF., ± 10%, 500-V., D.C.wkg., No.2 (C30A supersedes C7A on Mk.1, with serial numbers over 1,800 and on Mk.2)	C24C	C5C	1
29	%	Z1/ZA.1643	CAPACITORS, silvd., mica protd., 10-pF., ± 20%, 350-V., D.C.wkg., No.1 (Used on Mk.1 equipments, over serial No.1800 and on Mk.2) (Fixed to one side of crystal holder and chassis)	C24D	C5D	1
30	%	Z/Z.125041	CAPACITORS, silvd., mica protd., 15-pF., ± 10%, 350-V., D.C.wkg., No.2 (C32A is used on Mk.1 serial nos. over 1800 and on Mk.2) (Fixed across S2 switch wafer)	C25	C25A	1
31	%	Z1/ZA.32110	CAPACITORS, silvd., mica protd., 20-pF., ± 20%, 350-V., D.C.wkg., No.1	C26A	C26A	2
32	%	Z/Z.125068	CAPACITORS, silvd., mica protd., 22-pF., ± 10%, 350-V., D.C.wkg., No.2	C26B	C26B	1
33	%	Z/Z.125265	CAPACITORS, silvd., mica protd., 120-pF., ± 2%, 350-V., D.C.wkg., No.1 (one off each of items 32 and 33 are used in parallel)	C27	C33A	1
34	%	Z1/ZA.25387	CAPACITORS, silvd., mica protd., 30-pF., ± 10%, 350-V., D.C.wkg., No.2 (C7A is used on Mk.1 up to serial nos. 1800, then superseded by C30A)	C28	C7A	2
35	%	Z1/ZA.30275	CAPACITORS, silvd., mica protd., 90-pF., ± 20%, 350-V., D.C.wkg., No.1	C34	C7B	2
36	%	Z1/ZA.29932	CAPACITORS, silvd., mica protd., 0.0017-uF., ± 2%, 350-V., D.C.wkg., No.1	B35	C1A	2
37	%	Z1/ZA.29931	CAPACITORS, silvd., mica protd., 0.0035-uF., ± 2%, 350-V., D.C.wkg., No.1	C35	C1B	1
38	%	Z1/ZA.30273	CAPACITORS, variable, 501-pF., max., No.1	C36	C13A	1
39	%	Z1/ZA.20614	CONDENSERS, P.1.B.T. (paper metal tubular 0.1-uF., ± 20%, 350-V., D.C.wkg.)	C37	C14A	1
				B38	C27A	1
				C39A	C3A	18
				C39B	C3B	
				C39C	C3C	
				C39D	C3D	
				C39E	C3E	
				C39F	C3F	

13A - A13A Z1/ZA 30505 BRACKETS, INSULATED, No.1 1 -
(This is a station list item)

+ 45A Z1/ZA 44600
 φ 51A Z3/ZC 7069

Case Metal 17 3/8 x 10 1/8 No 2 for Mk1 Sets only
 cleats, metal, single, radial 5/8" x 5/8" grip 1/2" strip to secure C35

ITEM No.	%	HOLDING SECTION AND CATALOGUE No.	DESIGNATION	ILLUS. No.	SCH REF.	No. OFF
				C39G C39H C39J C39K C39L C39M C39N C39P C39Q C39R C39S C39T C39U C39V C39W	C39 C3H C3J C3K C3L C3Q C3R C3S C3T C3U C3V C3W	
40	%	Z1/ZA.2836	CONDENSERS, R.1.A.H. (moulded mica stacked foil 0.001-uF., ± 25%, 350-V., D.C.wkg.)	C40C B4.1A	C2C C26A	2
41	%	Z1/ZA.1706	CONDENSERS, R.4.F. (moulded mica stacked foil 0.004-uF., ± 15%, 750-V. D.C.wkg.)			1
42	%	Z1/ZA.1439	CONDENSERS, K.1.J. (moulded mica stacked foil, 100-pF., ± 5%, 350-V., D.C.wkg.)	C42	C17A	1
43	%	Z1/ZA.2005	CONDENSERS, Z.5.G. (silvered mica, protected, 5-pF., ± 20%, 350-V. D.C.wkg.) (CBA is used on Mk.1 up to serial no.1800, then superseded by C31A)	B43	C8A C8B	2
44	%	Z1/ZA.22069	GAFFS, valve connection, insulated, No.12 (Top cap for valves, V1C, V2A)	B44	-	2
+ 45	%	Z1/ZA.29953	CASES, metal, 17.3/8-in. x 10.1/8-in. x 8.1/8-in., No.1	A45	-	1
46	%	Z1/ZA.30064	CHOKES, modulator, No.5	C46	L11	1
47	%	Z1/ZA.30062	CHOKES, R.F., 1.55-mH, No.1	C47	L12	1
48	%	Z1/ZA.30061	CHOKES, R.F., 240-ohm, No.1 200 μH No.2	C48A C48B C48C	L4A L4B L4C	3
49	%	Z1/ZA.30063	CHOKES, R.F., 470-ohm, No.1	C49	L1A L1D	2
50	%	Z1/ZA.30074	CLAMPS, crystal holder retaining, No.1	A50	-	1
a φ 51	%	Z1/ZA.30068	CLAMPS, dial locking, No.2	A51	-	1
52	%	Z1/ZA.30215	CLICK-PLATES, 2-position, No.7 (Part of S1)	C52	-	1
53	%	Z1/ZA.31032	CLIPS, meter securing, No.3 - for use in item 162	B53	-	2
54	%	Z1/ZA.14477	CLIPS, retaining, cranked, 7/8-in. x 1/4-in., No.1 (For item 5)		-	4
55	%	Z1/ZA.12297	CLIPS, valve connection, 0.358-in. dia., No.2 (For valves, V1A, V1B, V1D, V1E)	B55	-	2
56	%	Z1/ZA.33986	CLIPS, valve connection, 0.25-in. dia., No.1 (For valve V4A)		-	1
57	%	Z1/ZA.30250	COLLARS, metal, 5/8-in. dia. x 1/4-in., bore, No.1 (Used on S1A and S2A)		-	2
58	%	X3/WB.3765	COMPOUND, kingsnorth (For seals)		-	as reqd.
59	%	Z1/ZA.30073	CONNECTORS, flexible, 5-point, No.12 Twin No 219 Baller lead Twin No 217 Fast connecting lead	A59	S01A S01B	2
59A	%	Z1/ZA.32602				
59B	%	Z1/ZA.32603				
60	%	Z1/ZA.14723	GROMMETS, rubber, sleeve, 1.7/8-in. long x 7/16-in. bore, No.1	A60	-	1
60A	%	Z1/ZA.37065	RETAINERS, grommet sleeve, 11/16-in. dia., No.1, Mk.1/1	A60A	-	2
61	%	Z1/ZA.2994	SOCKETS, 5-point, No.5	A61	-	1
62	%	Z1/ZA.14778	SOCKETS, 5-point, No.5, contact assembly	A62	-	1
63	%	Z1/ZA.14695	SOCKETS, 5-point, No.5, cord grips	A63	-	1
64	%	Z1/ZA.12345	SOCKETS, 5-point, No.5, covers, rubber	A64	-	1
65	%	Z1/ZA.37124	COVERS, metal, 1.5/8-in. I.D. x 15/32-in., No.1, Mk.1/1	B65	-	2
66	%	Z1/ZA.30103	COVERS, metal, sealing, 1/2-in. dia., No.1	A66	-	1
67	%	Z1/ZA.30165	COVERS, relay, 3-in. x 2-in. x 1-in., No.1	B67	-	1
68	%	Z1/ZA.30154	CUPS, metal, 13/16-in. x 3/16-in., No.1 (Used on items 168, 170 and 51)		-	3
69	%	Z1/ZA.30194	CUPS, metal, 13/16-in. x 1/4-in., No.1 (behind items 71 and 72)		-	2
70	%	Z1/ZA.30195	CUPS, metal, 1.1/8-in. x 1/2-in., No.1 (used behind items 105 and on items 167 and 169)		-	4
71	%	Z1/ZA.30199	DIALS, engraved, 0-9, 2.5/8-in. dia., No.1	A71	-	1
72	%	Z1/ZA.30077	DIALS, engraved, 0-100, 2.5/8-in. dia., No.1	A72	-	1
73	%	Z1/ZA.30076	DIALS, engraved, 1.6-10, Mc/s., 3.1/2-in. dia., No.1	A73	-	1
74	%	Z1/ZA.3579	FUSES, cartridge, No.1, 250-mA. (1-in. use, 2 spare)	B74	F1	3
75	%	Z1/ZA.30162	GASKETS, cork, 1.1/8-in. x 1.3/8-in., No.1 (used on flick window)		-	1
76	%	Z1/ZA.30164	GASKETS, cork, 1.7/16-in. dia., No.1 (used on aerial terminal)		-	1
77	%	Z1/ZA.30160	GASKETS, cork, 1.5/8-in. x 1.3/16-in., No.1 (used on crystal holder)		-	1
78	%	Z1/ZA.30161	GASKETS, cork, 2.7/32-in. x 1.1/8-in., No.1 (used on counter window)		-	1
79	%	Z1/ZA.30159	GASKETS, cork, 3-in. x 2.1/4-in., No.1 (used on switch cover plate)		-	1

* 52A % Z1/ZA 11921 Caps, meter securing No.1 (for use in item 162A)
 a 51B - A51B Z1/ZA 29838 CONNECTORS, SINGLE, No. 121B
 (This is normally a part of item 2B)

ITEM No.	%	HOLDING SECTION AND CATALOGUE No.	DESIGNATION	ILLUS. No.	SCH REF.	No. OFF
80	%	Z1/ZA.1807	GROMMETS, rubber, 9/16-in. dia. x 5/16-in. bore, No.1 (To cushion item 124)	-	-	2
81	%	Z1/ZA.30296	HOLDERS, valve, 9-pin, British, loctal, No.2	C81	-	2
82	%	Z1/ZA.4275	HOLDERS, valve, octal, British, No.1	C82	-	8
83	%	Z1/ZA.1777	HOLDERS, valve, octal, International, No.2	C83	-	1
84	%	Z1/ZA.29920	INDUCTANCE UNITS, B.F.O. No.13 (includes items 85 to 88)	B84	L10	1
85	%	Z1/ZA.30067	CANS, screening coil, 3.1/4-in. x 1.3/8-in. dia., No.1	B85	-	1
86	%	Z1/ZA.30274	CAPACITORS, silvd. mica, prot'd., 90-pF., $\pm 5\%$, 350-V., D.C.wkg., No.1	-	C20A	1
87	%	Z/Z.125580	CAPACITORS, silvd. mica, prot'd., 820-pF., $\pm 2\%$, 350-V., D.C.wkg., No.2	-	C19A	1
88	%	Z1/ZA.36456	CORES, iron dust, 0.210-in. dia. x 1-in., stem, No.8 B.A. x 3/4-in., No.1 (Item 86 is in series with one winding, item 87 is in parallel with another)	-	-	1
89	%	Z1/ZA.30058	INDUCTANCE UNIT, R.F., No.54 (includes items 90 and 91)	C89	L6	1
90	%	Z/Z.167005	CAPACITORS, semi-fixed, 30-pF., max., No.3	C90B	C12B	1
91	%	Z1/ZA.36456	CORES, iron dust, 0.210-in. dia. x 1-in., stem, No.8 B.A. x 3/4-in., No.1	-	-	1
92	%	Z1/ZA.30059	INDUCTANCE UNITS, R.F., No.55 (includes items 93 and 94)	C92	L5	1
93	%	Z/Z.167005	CAPACITORS, semi-fixed, 30-pF., max., No.3	C90A	C12A	1
94	%	Z1/ZA.36456	CORES, iron dust, 0.210-in. dia. x 1-in., stem, No.8 B.A. x 3/4-in., No.1	-	-	1
95	%	Z1/ZA.30099	INDUCTANCE UNITS, R.F., No.57 (includes items 96 and 97)	C95	L2	3
96	%	Z1/ZA.1605	CAPACITORS, semi-fixed, 15-pF., max., No.2	-	C10	1
97	%	Z1/ZA.36456	CORES, iron dust, 0.210-in. dia. x 1-in., stem, No.8 B.A. x 3/4-in., No.1	-	-	1
98	%	Z1/ZA.30100	INDUCTANCE UNITS, R.F., No.58 (includes items 99 and 100)	C98	L3	3
99	%	Z1/ZA.26535	CAPACITORS, semi-fixed, 50-pF., max., No.10	-	C11	1
100	%	Z1/ZA.36456	CORES, iron dust, 0.210-in. dia. x 1-in., stem, No.8 B.A. x 3/4-in., No.1	-	-	1
101	%	Z1/ZA.30060	INDUCTANCES, R.F., 20-turns, No.2	-	L9	1
102	%	Z1/ZA.30065	INDUCTANCES, variable, No.25 (for component parts refer to I.E.M.E. Component list No.2038)	B102	L13	1
103	%	Z1/ZA.30097	KNOBS, metal, 1.1/2-in. x 1.1/2-in., No.1	A103	-	1
104	%	Z1/ZA.30187	KNOBS, moulded pointer, 7/8-in. dia., No.1	A104	-	5
105	%	Z1/ZA.30186	KNOBS, moulded pointer, 1.1/16-in. dia., No.1	A105	-	2
106	%	Z1/ZA.30104	KNOBS, moulded, round, 1.5/8-in. dia., No.1	A106	-	1
107	%	Z1/ZA.30105	KNOBS, moulded, round, 1.5/8-in. dia., No.2	A107	-	1
108	%	Z1/ZA.31244	KNOBS, moulded, round, 1.5/8-in. dia., No.4	A108	-	1
109	%	Z1/ZA.30098	LEVERS, metal, No.1, Mk.1/1	A109	-	1
110	%	X/Z.31746	METERS, test, No.4/1T	A110	M1A	1
111	%	Z1/ZA.30087	PADS, sponge rubber, 5-in. x 3.1/2-in., No.1	C111	-	2
112	%	Z1/ZA.30093	PANELS, front, 16.3/4-in. x 7.3/4-in., No.1	A112	-	1
113	%	Z1/ZA.30075	PANELS, tag, 3-way, 1.7/16-in. x 7/8-in., No.1	C113	-	2
114	%	Z1/ZA.36056	PINS, belt fixing, No.1 (used with Mk.1 sets only)	-	-	2
115	%	Z1/ZA.30092	PLATES, clamping, 1.1/2-in. dia., No.1	A115	-	1
116	%	Z1/ZA.30095	PLATES, clamping, 1.1/2-in. x 1.1/2-in., No.1	A116	-	1
117	%	Z1/ZA.30091	PLATES, clamping, 1.9/16-in. x 1.1/8-in., No.1	A117	-	1
118	%	Z1/ZA.30080	PLATES, cover, 16-in. x 9-in., No.1 (base cover for set)	-	-	1
119	%	Z1/ZA.30094	PLATES, escutcheon, 3-in. x 2.1/4-in., No.1	A119	-	1
120	%	Z1/ZA.30079	PLATES, metal, 13/16-in. x 1/4-in., No.1 (used on item 118)	-	-	1
121	%	Z1/ZA.30089	PLATES, perspex, 2.1/4-in. x 1-in., No.1	A121	-	1
122	%	Z1/ZA.30096	PLATES, valve-holder clamping, No.1 (used on V3)	-	-	1
123	%	Z1/ZA.30072	PLUGS, 2-point, No.44	A123	FL1	1
124	%	Z1/ZA.29918	POWER SUPPLY UNITS, No.36 (for Component parts, refer to I.E.M.E. Component list No.E.S.2036)	C124	-	1
125	%	Z1/ZA.35676	POTENTIOMETERS, miniature, W.W., 1-watt, linear, 20-ohms, No.2	C125	R22A	1
126	%	Z1/ZA.15393	POTENTIOMETERS, miniature, W.W., 1-watt, linear, 550-ohms, No.3	B126	R26A	1
127	%	Z1/ZA.30153	POTENTIOMETERS, miniature, carbon track, 1/4-watt, log, 1-megohm, No.2	C127	R18A	1
128	%	Y1/ZA.7859	RELAYS, No.600, type (W.D.) V.	B128	A/2	1
129	%	Z1/ZA.30831	RESISTANCES, 4.2-ohms, $\pm 3\%$, 1/10-watt, No.1 (R24B is used on Mk.1, with serial nos. over 1000, and Mk.2)	C129A	R24A	2
130	%	Z1/ZA.15389	RESISTANCES, tapped, 860-ohms, No.1	C130	R15A	1
131	%	Z1/ZA.29919	RESISTANCES, tubular, 30-ohms, $\pm 2\%$, 6-watts, No.1	C131	R16A	1
132	%	Z1/ZA.2970	RESISTANCES, tubular, 20,000-ohms, No.8	C132A	R13A	2
133	%	Z1/ZA.16216	RESISTORS, 2A, 1-watt, 33,000-ohms	C132B	R13B	1
134	%	Z1/ZA.16900	RESISTORS, 2B, 1-watt, 1.2-megohms	C133	R11A	1
135	%	Z1/ZA.30626	RESISTORS, 2D, 1/2-watt, 220,000-ohms	B134	R29A	1
136	%	Z1/ZA.19096	RESISTORS, 2D, 1-watt, 68,000-ohms	C135	R1A	1
137	%	Z1/ZA.10799	RESISTORS, 3A, 1/4-watt, 150,000-ohms	C136	R21A	1
138	%	Z1/ZA.15070	RESISTORS, 3B, 1/2-watt, 1.2-megohms	C137	R30A	1
139	%	Z1/ZA.19243	RESISTORS, 3D, 1/4-watt, 22-ohms	B138	R28A	1
140	%	Z1/ZA.19253	RESISTORS, 3D, 1/4-watt, 3,300-ohms	B139	R10A	1
				C14,0A	R12A	2
				C14,0B	R12B	2

* 110A % Z1/ZA.41226

Pad 9 Cover Assy 8.3/4 x 4 x 1 1/2 inch
to cushion set against wearers back

1

154A Z1/ZA 40497 } Reactor W.W. requested, wire end { low 9.5Ω ±2% - R34A
 154B Z1/ZA 243342 } { 1 1/2 W 75Ω ±5% - R35A

a 170A - A170A Y3/YC 01608 TERMINALS, POST, BRASS, 1.5/8 in. LONG
 x ZBA STEM

ITEM No.	%	HOLDING SECTION AND CATALOGUE No.	DESIGNATION	ILLUS. No.	SCH REF.	No. OFF
141	%	Z1/ZA.19254	RESISTORS, 3D, 1/4-watt, 4,700-ohms (R3C is used on Mk.1 with serial nos. over 1,000 and on Mk.2)	B141A C141B C141C	R3A R3B R3C	3
142	%	Z1/ZA.17231	RESISTORS, 3D, 1/4-watt, 10,000-ohms	C142	R9A	1
143	%	Z1/ZA.19256	RESISTORS, 3D, 1/4-watt, 15,000-ohms	C143	R17A	1
144	%	Z1/ZA.17234	RESISTORS, 3D, 1/4-watt, 22,000-ohms	C144A C144B C144C C144D	R8A R8B R8C R8D	3
145	%	Z1/ZA.26501	RESISTORS, 3D, 1/4-watt, 39,000-ohms	C145	R23A	1
146	%	Z1/ZA.18016	RESISTORS, 3D, 1/4-watt, 47,000-ohms (R7D is used on Mk.1, with serial nos., up to 1000)	C146A C146B C146C C146D	R7A R7B R7C R7D	4
147	%	Z1/ZA.17235	RESISTORS, 3D, 1/4-watt, 100,000-ohms	B147A C147B C147C C147D C147E	R2A R2B R2C R2D R2E	5
147A	%	Z1/Z. 223037	Reactor, composition, unannealed 1/4 watt 100KΩ ±10% for use on item 2A only			
			(R2E replaces R14A on Mk.1, with serial nos. over 1000 and Mk.2)			
148	%	Z1/ZA.19261	RESISTORS, 3D, 1/4-watt, 220,000-ohms	C148	R49A	4
149	%	Z1/ZA.19263	RESISTORS, 3D, 1/4-watt, 470,000-ohms Reactor, composition, unannealed, 1/4 watt 220KΩ ±10% for use on item 2A only	B149A C149B C149C C149D C150A C150B C150C C150D C150E C147E	R6A R6B R6C R6D R4A R4B R4C R4D R4E R14A	4
148A	%					
150	%	Z1/ZA.19265	RESISTORS, 3D, 1/4-watt, 1-megohm	C150A C150B C150C C150D C150E	R4A R4B R4C R4D R4E	5
150A	%	Z1/Z. 223205	Reactor composition unannealed 1/4 W 2.2 MΩ 10% for use on item 2A only			
151	%	Z1/ZA.19290	RESISTORS, 3D, 1/2-watt, 47,000-ohms (R14A is replaced on Mk.1 with serial nos. over 1000 by R2E)	C152A C152B	R5A R5B	2
152	%	Z1/ZA.19292	RESISTORS, 3D, 1/2-watt, 100,000-ohms	C153	R20A	1
153	%	Z/Z. 223092	RESISTORS, carbon, grade 2, insulated, 1/2-watt, 270,000-ohms, ± 10%	B154	R27A	1
154	%	Z1/ZA.22042	RESISTORS, H.S., 1/2-watt, 29,500-ohms, ± 2%, No.2	B155	-	2
155	%	Z1/ZA.29940	RETAINERS, valve, No.63	C156	-	6
156	%	Z1/ZA.30101	SCREWS, captive, 2 B.A., No.6	-	-	1
156A	%	Z1/ZA.37143	SCREWS, special, B.A., steel, cheese-head, No.4 x 7/32-in., No.1 (behind item 108)	-	-	1
157	%	Z1/ZA.30190	SEALS, rubber, 13/32-in. O.D. x 7/32-in. I.D., No.1 (behind item 66)	-	-	1
158	%	Z1/ZA.30191	SEALS, rubber, 9/16-in. dia. x 5/16-in., No.1 (behind item 71)	-	-	1
159	%	Z1/ZA.30189	SEALS, rubber, 3/4-in. dia. x 1/4-in., No.1 (behind items 68 and 69)	-	-	5
160	%	Z1/ZA.30188	SEALS, rubber, 1.1/16-in. dia. x 9/16-in., No.1 (behind item 70)	-	-	4
161	%	Z1/ZA.30192	SEALS, rubber, 2.1/8-in. dia. x 1/4-in., No.1 (behind item 73)	-	-	1
162	%	Z1/ZA.33003	SEALS, rubber, 2.5/16-in. dia. x 1/4-in., No.1 (for item 110) for use E item S3 on MK 2 Sets	A162	-	1
163	%	Z1/ZA.30208	SEALS, rubber, 49.1/2-in., perimeter, x 3/8-in., No.1 (for case)	-	-	1
164	%	Z1/ZA.30070	SOCKETS, 2-point, No.57	A164	S02	1
165	%	Z1/ZA.30071	SOCKETS, 6-point, No.17	A165	S03A S03B	2
165A	%	Z1/ZA.37139	SPRINGS, helical compression, 7-turns, 5/16-in. O.D. x 3/4-in., free length, 20 S.W.G. (behind item 156A)	-	-	1
166	%	Z1/ZA.30084	STAYS, panel supporting, No.1	B166	-	1
167	%	Z1/ZA.30163	SWITCHES, on-off, D.P., No.42	C167	S3A	1
168	%	Z1/ZA.30149	SWITCHES, rotary, wafer, 1-bank, 2-pole, 2-position, 5.5/8-in. spindle, No.1	B168	S2A	1
169	%	Z1/ZA.30198	SWITCHES, rotary, wafer, 1-bank, 2-pole, 6-position, 1-in. spindle, No.1	B169	S5A	1
170	%	Z1/ZA.30197	SWITCHES, rotary, wafer, 3-bank, 3 x 3-pole, 3-position, 11/16-in. spindle, No.1	C170	S4A	1
171	%	Z1/ZA.29927	TERMINALS, insulated, 2 B.A., No.3	A171	-	1
172	%	Z1/ZA.30069	TRANSFORMER UNITS, E.F., No.2 (for component parts refer to I.E.M.E. Component List No.2039)	B172	T7	1
173	%	Z1/ZA.29921	TRANSFORMERS, I.F., No.89 (includes items 174 to 177)	B173	T1	1
174	%	Z1/ZA.30067	CANS, screening coil, 3.1/4-in. x 1.3/8-in. dia., No.1	B85	-	1
175	%	Z1/ZA.12297	CLIPS, valve connection, 0.358-in. dia., No.2	-	-	1
176	%	Z1/ZA.30276	CAPACITORS, silvd. mco, prot'd., 250-pF., ± 2%, 350-V., D,C.wkg., No.2	-	C6A C6B	2
177	%	Z1/ZA.36456	CORES, iron dust, 0.210-in. dia. x 1-in., stem No.8 B.A. x 3/4-in., No.1	-	-	2
178	%	Z1/ZA.29922	TRANSFORMERS, I.F., No.90 (includes items 179 to 182)	B178	T2	1

Reinstated

Reinstated

+

* 162A % Z1/ZA 30193

Seals rubber, 2 5/8 x 1/2 inch. For use on MK I sets used E item S2A

ITEM No.	%	HOLDING SECTION AND CATALOGUE No.	DESIGNATION	ILLUS. No.	SCH REF.	No. OFF
179	%	Z1/ZA.30067	CANS, screening coil, 3.1/4-in. x 1.3/8-in. dia., No.1	B85	-	1
180	%	Z1/ZA.12297	CLIPS, valve connection, 0.358-in. dia., No.2	-	-	1
181	%	Z1/ZA.36456	CORES, iron dust, 0.210-in. dia. x 1-in., stem No.8 B.A. x 3/4-in., No.1	-	-	2
182	%	Z1/ZA.30276	CAPACITORS, silvd. mica, protld., 250-pF., ± 2%, 350-V., D.C.wkg., No.2	-	O6C O6D	2
183	%	Z1/ZA.29923	TRANSFORMERS, I.F., No.91 (includes items 184 to 186)	B183	T3	1
184	%	Z1/ZA.30067	CANS, screening coil, 3.1/4-in. x 1.3/8-in. dia., No.1	B85	-	1
185	%	Z1/ZA.29929	CAPACITORS, silvd. mica, protld., 410-pF., ± 2%, 350-V., D.C.wkg., No.1	-	C15A C15B	2
186	%	Z1/ZA.36456	CORES, iron dust, 0.210-in. dia. x 1-in., stem, No.8 B.A. x 3/4-in., No.1	-	-	2
187	%	Z1/ZA.29924	TRANSFORMERS, microphone, No.56	B187	T4	1
188	%	Z1/ZA.29925	TRANSFORMERS, output, No.62	C188	T5	1
189	%	Z1/ZA.27484	TRANSFORMERS, rotary, H.T., 11-watts, No.1 (part of power supply unit No.36) (for component parts, refer to I.E.M.E. Component List No. E.S.2036)	-	T6	1
190	%	Z1/ZA.30102	TUBES, metal, 7.1/16-in. x 3/8-in., No.1	A190	-	2
191	%	Z1/ZA.30066	UNITS, condenser and drive, No.9 (for component parts, refer to I.E.M.E. Component List No.E.S. 2037)	B191	-	1
192	%	Z1/ZA.30216	WAFERS, switch, 3-pole, No.6 (part of S.1)	C192	-	2
193	%	Z1/ZA.15397	WAFERS, switch, 4-pole, No.5 (part of S.1)	C193	-	1
194	%	Z1/ZA.30249	WASHERS, fibre, 3/8-in. dia. x 1/4-in. bore, No.1 (on rear of case)	-	-	1
195	%	Z1/ZA.30298	WASHERS, friction, 7/8-in. dia. x 7/32-in. bore, No.1 (behind item 17A)	-	-	1
196	%	Z1/ZA.30090	WASHERS, locating, 1.1/16-in. dia., No.1 (on item 127)	-	-	1
197	%	Z/CV.65	WITHOUT VALVES, electronic, C.V.65	B197A B197B	V3A V3B	2
198	%	Z/CV.1091	VALVES, electronic, C.V.1091	B198	V5A	1
199	%	Z/CV.1306	VALVES, electronic, C.V.1306	B199	V2A	1
200	%	Z/CV.1331	VALVES, electronic, C.V.1331	-	V1A V1B V1C V1D V1E	5
201	%	Z/CV.1347	VALVES, electronic, C.V.1347	B200	V4A	1
202	%	Z/CV.1510	VALVES, electronic, C.V.1510	B201 B202	V6A	1

APPENDIX

Note 1. Parts which have been provided for normal maintenance, and are held in Ordnance Stores for issue, are marked %.
Demands for any other part must be endorsed, certifying reason for demand i.e., "To replace broken part or worn out part etc."

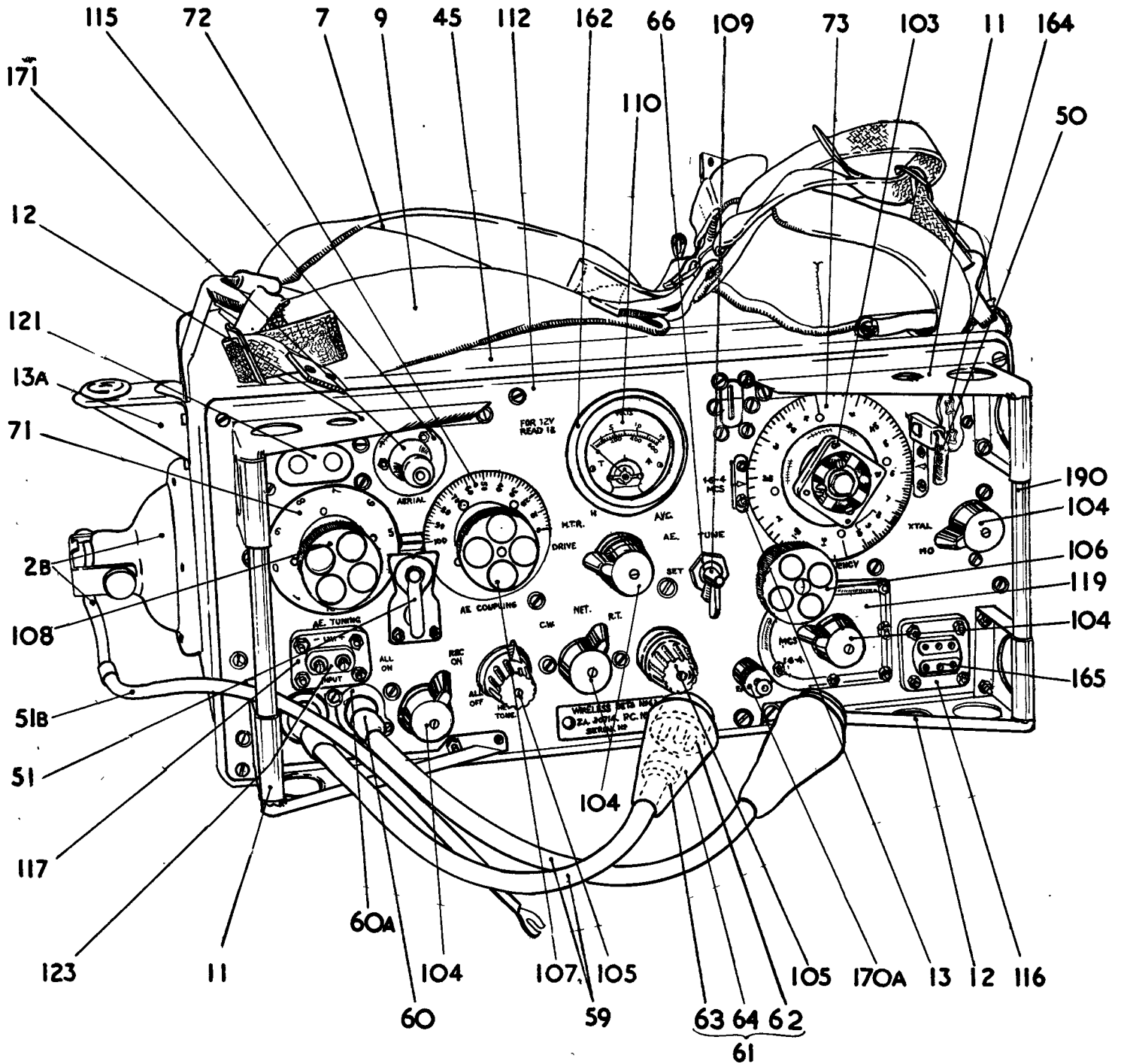
Note 2. For list of transfers for use on this equipment see Appendix 2

APPENDIX No. 2

1	-	Z1/ZA 46065	TRANSFER SETS, WIRELESS SETS, No. 62, comprises items 2 to 20.			1
2	-	Z1/ZA 46066	TRANSFERS, PAINT, "1.6 - 4 MC/S"			1
3	-	Z1/ZA 46067	TRANSFERS, PAINT, "4 - 10 MC/S"			1
4	-	Z1/ZA 47565	TRANSFERS, PAINT, "4 - 10 MC/S, 1.6 - 4"			1
5	-	Z1/ZA 47564	TRANSFERS, PAINT, "-12V + INPUT"			1
6	-	Z1/ZA 46068	TRANSFERS, PAINT, "AERIAL"			1
7	-	Z1/ZA 47566	TRANSFERS, PAINT, "AERIAL COUPLING", No. 2			1
8	-	Z1/ZA 46069	TRANSFERS, PAINT, "AERIAL TUNING"			1
9	-	Z1/ZA 46071	TRANSFERS, PAINT, "ALL ON, REC ON, ALL OFF"			1
10	-	Z1/ZA 46072	TRANSFERS, PAINT, "CW. NET, RT."			1
11	-	Z1/ZA 46073	TRANSFERS, PAINT, "DRIVE, HTR, HTS, IN, AVC, A.R."			1
12	-	Z1/ZA 47568	TRANSFERS, PAINT, "EARTH." No. 2			1
13	-	Z1/ZA 46074	TRANSFERS, PAINT, "FOR 12V READ"			1
14	-	Z1/ZA 46075	TRANSFERS, PAINT, "FREQUENCY"			1
15	-	Z1/ZA 46076	TRANSFERS, PAINT, "GAIN"			1
16	-	Z1/ZA 46077	TRANSFERS, PAINT, "HET TONE", No. 2			1
17	-	Z1/ZA 47563	TRANSFERS, PAINT, "RC UNIT XTAL CAL."			1
18	-	Z1/ZA 44987	TRANSFERS, PAINT, "TUNE, SET, FLICK", No. 2			1
19	-	Z1/ZA 46080	TRANSFERS, PAINT, "XTAL"			1
20	-	Z1/ZA 47567	TRANSFERS, PAINT, "XTAL MD"			1

A

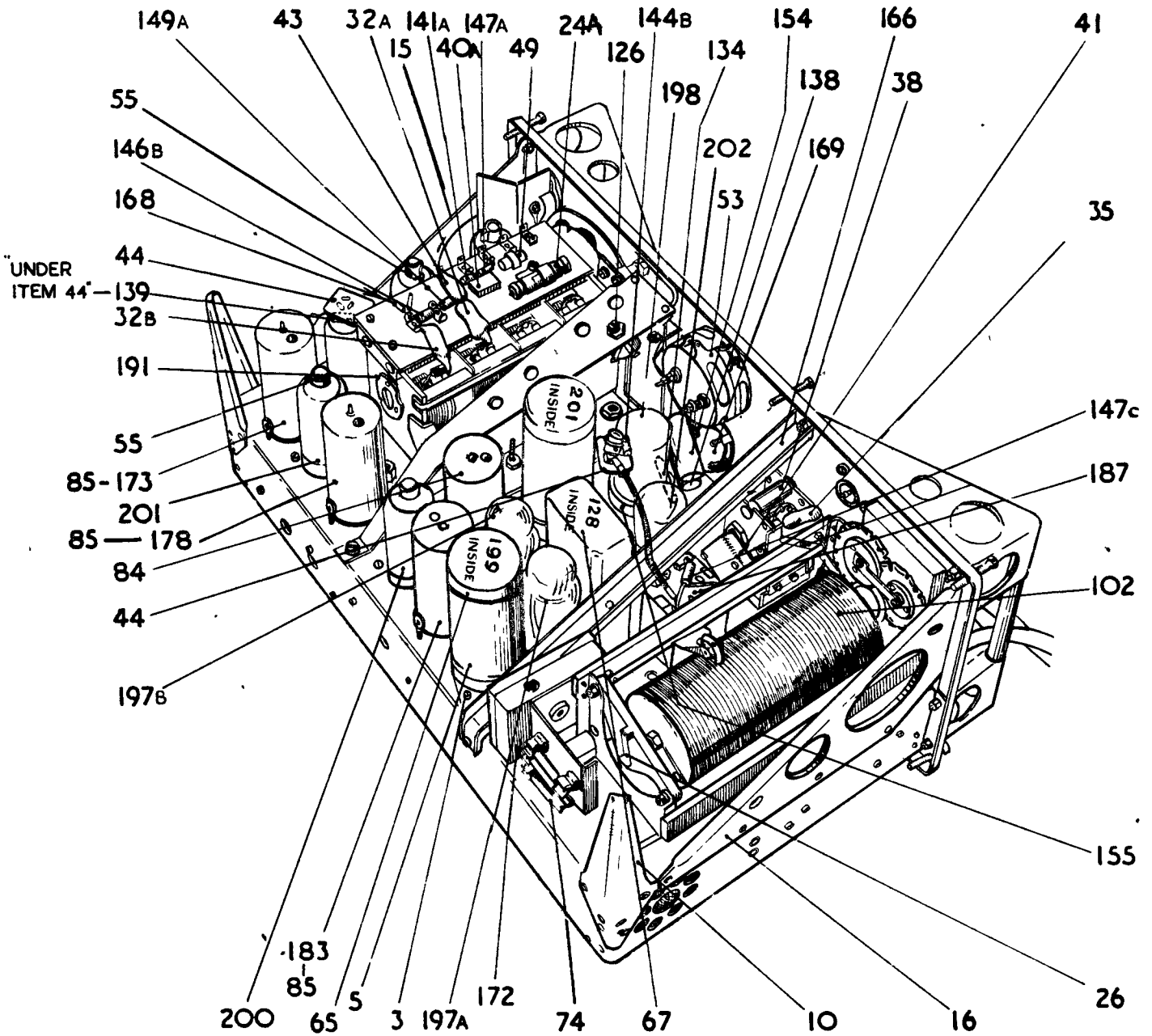
A



WIRELESS SET No 62 FRONT PANEL

B

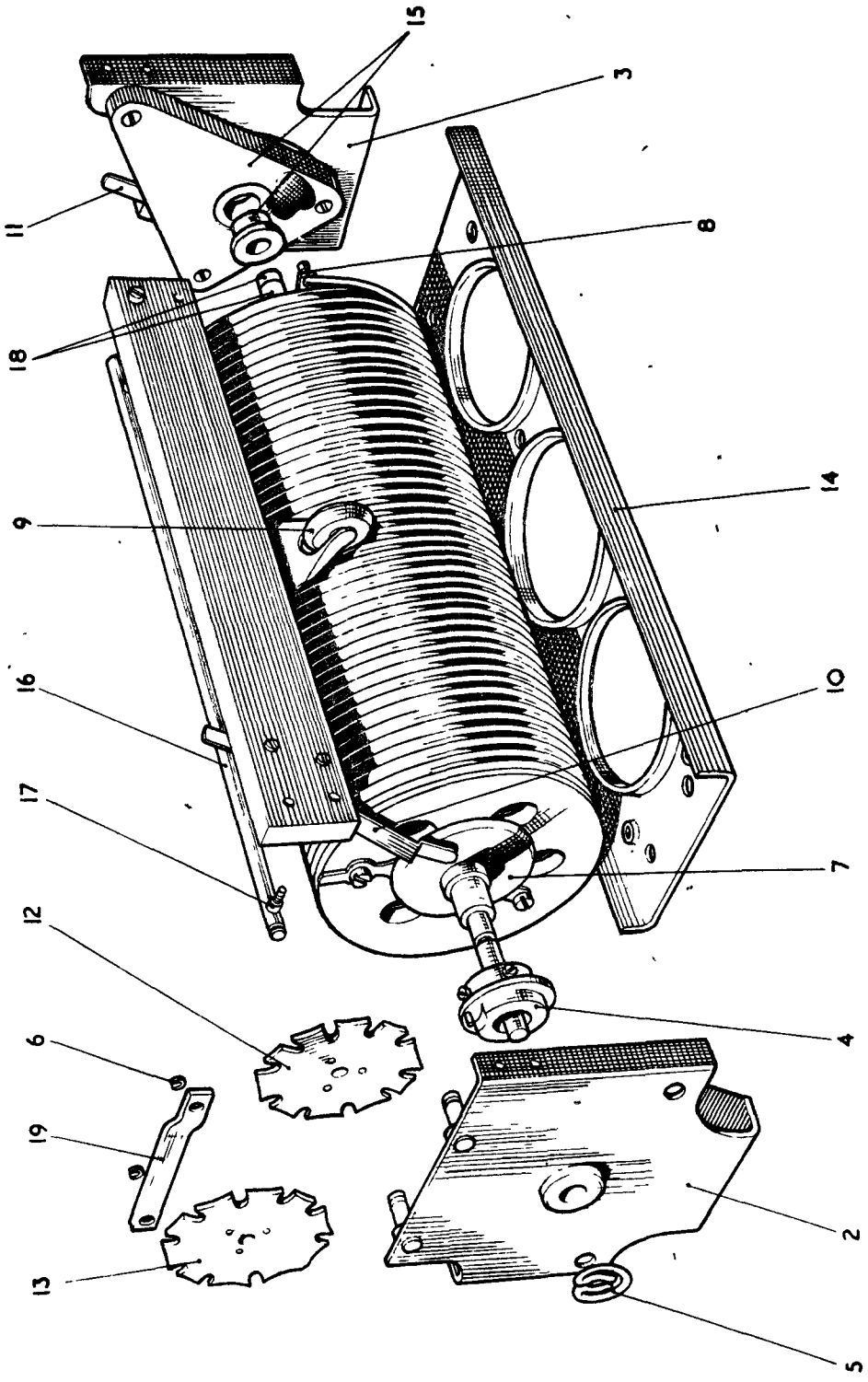
B



WIRELESS SETS No62 CHASSIS VIEW

D

D



INDUCTANCES VARIABLE No.25.

FOR:- INDUCTANCES, VARIABLE, NO.25

Page 1 of 1

ITEM No.	%	HOLDING SECTION AND CATALOGUE No.	DESIGNATION	ILLUS. No.	SCH REF.	No. OFF
1	%	Z1/ZA.30065	INDUCTANCES, variable, No.25	S3219	L13	1
2		Z1/ZA.37122	BRACKET AND BUSH ASSEMBLIES, No.3	D2	-	1
3		Z1/ZA.37124	BRACKETS, metal, 3-in. x 3-in. x 21/32-in., overall, No.1	D3	-	1
4	%	Z1/ZA.30201	BUSH ASSEMBLIES, counter drive, No.2	D4	-	1
5		Z1/ZA.14555	CIRCLIPS, external, steel, 7/64-in. gap, 20 S.W.G.	D5	-	1
6		Z1/ZA.25395	CIRCLIPS, special, steel, 1/8-in. slot, x 1/4-in., O.D.	D6	-	2
7		Z1/ZA.37123	CONTACTS, copper, circular, 3/4-in. I.D. x 1.1/16-in. O.D., No.1	D7	-	1
8		Z1/ZA.37125	CONTACTS, phos. B., 1.1/4-in. x 15/32-in., max. dia. x 27 S.W.G., No.1	D8	-	1
9	%	Z1/ZA.31033	CONTACTS, roller, No.3A	D9	-	1
10	%	Z1/ZA.30202	CONTACTS, spring, No.51	D10	-	1
11	%	Z1/ZA.30203	CONTACTS, spring, No.52	D11	-	1
12		Z1/ZA.37126	DIALS, engraved 0-9, 1.3/4-in. dia., No.1	D12	-	1
13		Z1/ZA.37127	DIALS, engraved, 0-9, 1.3/4-in. dia., No.2	D13	-	1
14		Z1/ZA.37128	PLATES, metal, 7.1/2-in. x 2.1/4-in. x 3/8-in., No.1	D14	-	1
15		Z1/ZA.16488	PLATES, mounting, No.10	D15	-	1
16		Z1/ZA.37129	RODS, contact, metal, 6.1/32-in. x 3/16-in. dia., No.1	D16	-	1
17		Z1/ZA.37130	SPACERS, brass, 3/32-in. I.D. x 3/16-in. O.D. x 1/16-in., No.1	D17	-	2
18		Z1/ZA.37131	SPINDLE AND CONTACT ASSEMBLIES, No.2	D18	-	1
19		Z1/ZA.37132	STRIPS, metal, cranked, 1.33/64-in. x 5/16-in. x 19 S.W.G.	D19	-	1
13A	%	Z1/ZA 41687	Inductors RF 110 turns 20 SWG wound former	D	-	1

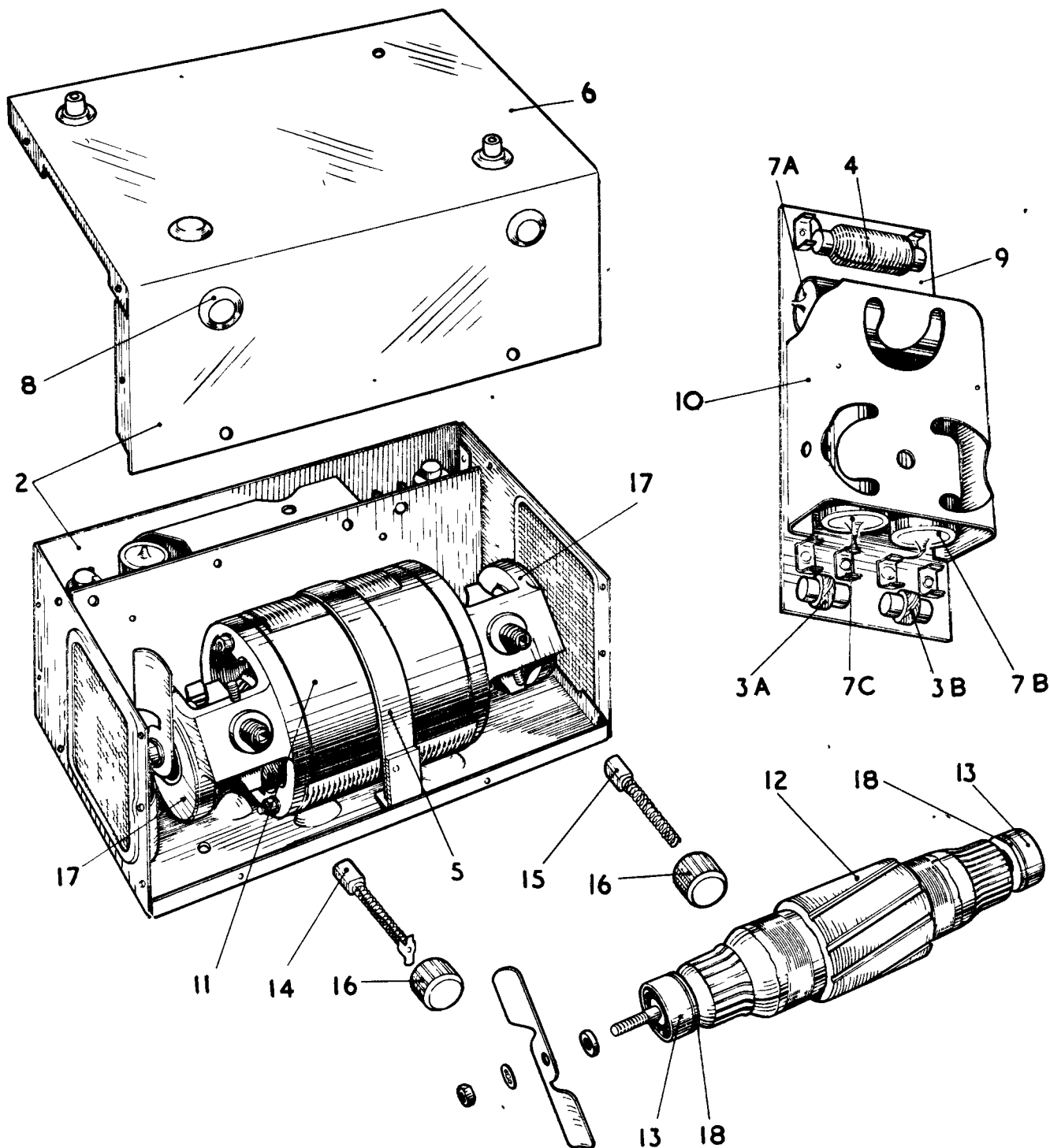
APPENDIX

Note 1. Parts which have been provided for normal maintenance, and are held in Ordnance Stores for issue, are marked %.

Demands for any other part must be endorsed, certifying reason for demand, i.e., "To replace broken part or worn out part, etc."

E

E

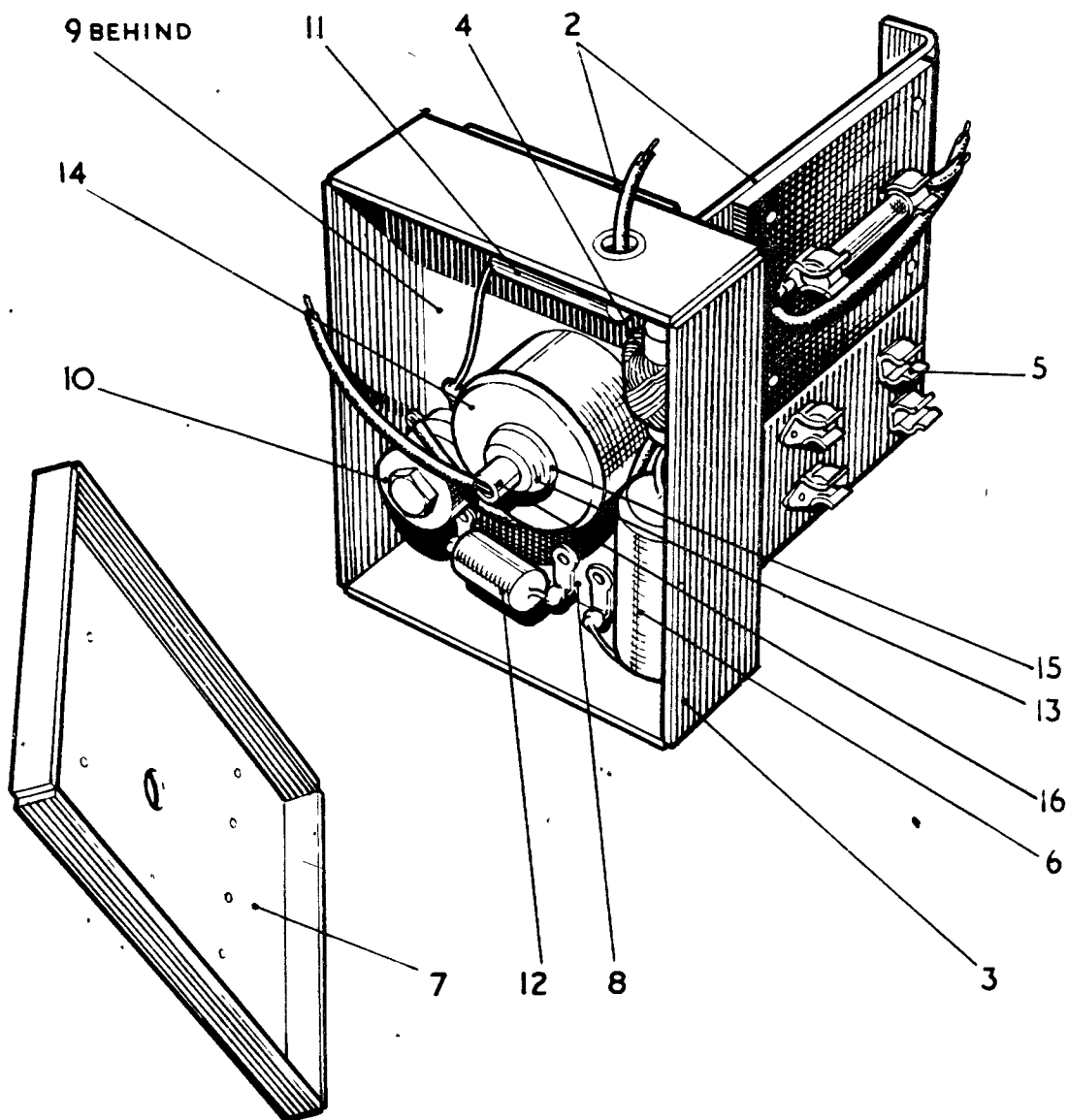


POWER SUPPLY UNITS N° 36

FOR:- POWER SUPPLY UNITS, No.36

Page 1 of 1

ITEM No.	%	HOLDING SECTION AND CATALOGUE No.	DESIGNATION	ILLUS. No.	SCH REF.	No. OFF
1	%	Z1/ZA.29918	POWER SUPPLY UNITS, No.36	S3050	Diag. 4462/II	
2		Z1/ZA.30205	INCLUDES, CASES, metal, 5-in. x 3.1/4-in. x 2.1/8-in., No.1 (includes item 6)	E2	-	1
3	%	Z1/ZA.30063	CHOKES, R.F., 470-uH., No.1	E3A E3B	L1B L1C	2
4	%	Z1/ZA.30207	CHOKES, R.F., No.209	E4	L8A	1
5	%	Z1/ZA.30206	CLAMPS, transformer, No.6	E5	-	1
6		Z1/ZA.37134	COVERS, metal, angular, 3.1/4-in. x 2.1/8-in., No.1 (cover for item 2)	E6	-	1
7	%	Z1/ZA.20614	CONDENSERS, P.I.B.T. (0.1-uF., ± 20%, 350-V., D.C.wkg., at 100°C.)	E7A E7B E7C	C3M C3N C3P	3
8	%	Z1/ZA.11336	GROMMETS, rubber, No.19 (Replaced by Sailmakers' eyelets where possible)	E8	-	3
9		Z1/ZA.36387	PANELS, tag, 7-way, 4.1/2-in. x 1.3/4-in., No.1	E9	-	1
10		Z1/ZA.37133	PLATES, metal, bent, 3.17/32-in. x 2.19/32-in. x No.23 S.W.G.	E10	-	1
11	%	Z1/ZA.27484	TRANSFORMERS, rotary, H.T., 11-watts, No.1 INCLUDES, ARMATURES, 310-V., No.1	E11	T6	1
12	%	Z1/ZA.30212	BEARINGS, ball, journal, single row, metric sizes, 4 x 16 x 5	E12	-	1
13	%	LV6/MT7.31927	BRUSHES, dynamo or motor, No.40	E13	-	2
14	%	Z1/ZA.30209	BRUSHES, dynamo or motor, No.40	E14	-	2
15	%	Z1/ZA.30210	BRUSHES, dynamo or motor, No.44	E15	-	2
16	%	Z1/ZA.30211	CAPS, brush holder, No.28	E16	-	4
17	%	Z1/ZA.30214	END-CAPS, metal, .1.3/16-in. dia., No.1	E17	-	1
18		Z1/ZA.30213	OIL-THROWERS, metal, 5/8-in. dia., No.1	E18	-	2
<p>Note: — Items 12, 15, 17 & 18 are replacement parts for Hoover models only</p>						
14	%	Amdt. 3/January, 1953 X2/ZA.30209	BRUSHES, carbon, grade CMH, 3/8-in. x 11/64-in. x 1/8-in. (1-in. captive spring, 1/4-in. x 11/64-in. terminal)	E14	-	2
15	%	X2/ZA.30210	BRUSHES, carbon grade EG3, 5/16-in. x 1/8-in. (7/8-in. free spring)	E15	-	2
<p>AFTER item 18 INSERT items 19, 20 and 21 and note</p>						
19		Amdt. 3/January, 1953 Z1/ZA.42170	TRANSFORMERS, rotary, H.T., 11-watt, No.1A (made by Newton Bros.)	-	-	1
20		Z1/ZA.42169	TRANSFORMERS, rotary, H.T., 11-watt, No.1B (made by Frigidaire Ltd.)	-	-	1
21		X2/ZA.42191	BRUSHES, carbon, grade IM6, 5/16-in. x 1/8-in. x 1/8-in. (7/8-in. free spring)	-	-	2
<p>NOTE: Items 19 or 20 are interchangeable with item 11 as a complete unit only.</p> <p>Items 19 and 20 include items 13, 14 (for L.T. use only), 16 and 21.</p>						



TRANSFORMER UNITS R F No.2.

FOR:- TRANSFORMER UNITS, R.F., No.2

ITEM No.	%	HOLDING SECTION AND CATALOGUE No.	DESIGNATION	ILLUS. No.	SCH REF.	No. OFF
1	%	Z1/ZA.30069	TRANSFORMER UNITS, R.F., No.2	S3220	Diag. 4462/II	
2		Z1/ZA.36458	GAN AND BRACKET ASSEMBLIES, No.2	F2	-	1
3		Z1/ZA.24931	GANs, screening, 2.1/2-in. x 2.1/8-in. x 11/16-in., No.1	F3	-	1
4	%	Z1/ZA.30063	CHOICES, R.F., 470 uH., No.1	F4	-	1
5		Z1/ZA.37135	CLIPS, single, double sided x 1/4-in. grip, x 13/32-in. x 9/32-in., overall (Part of item 2)	F5	-	6
6	%	Z1/ZA.2836	CONDENSERS, R.1.A.E. (moulded mica stacked foil, 0.001-uF., $\pm 25\%$, 350-V., D.C.wkg.)	F6	C2D	1
7		Z1/ZA.24933	COVERS, metal, 2.5/8-in. x 2.1/8-in. x 1/4-in., No.1 (cover for item 3)	F7	-	1
8		Z1/ZA.24935	PANELS, component mounting, 2.3/8-in. x 1.7/8-in., No.1	F8	-	1
9		Z1/ZA.24971	PLATES, insulating, 2.3/8-in. x 1.7/8-in., No.1	F9	-	1
10	%	Z1/ZA.5875	RECTIFIERS, metal, 5-mA.	F10	W1	1
11		Z1/ZA.14609	RECTIFIERS, metal, S.H.1.A.	F11	W2	1
12	%	Z1/ZA.18995	RESISTORS, 1/4-watt, 55-ohms	F12	R25A	1
13	%	Z1/ZA.30189	SEALS, rubber, 3/4-in. dia., x 1/4-in., No.1	F13	-	1
14	%	Z1/ZA.29926	TRANSFORMERS, R.F., No.42	F14	T7	1
15		Z1/ZA.21273	WASHERS, plastic, 11/32-in. I.D. x 3/4-in. O.D. x 1/32-in. thick, No.1	F15	-	1
			USED with, but not included in Component list -			
16		Z1/ZA.14670	BUSHES, insulating 0.055-in. I.D. x 1/2-in. O.D. x 1.1/8-in. long, No.1	F16	-	1
12	%	Z1/ZA.38376 ZA 41450	Resistor W.W., 28 Ω $\pm 10\%$ No1	F12	R25A	1

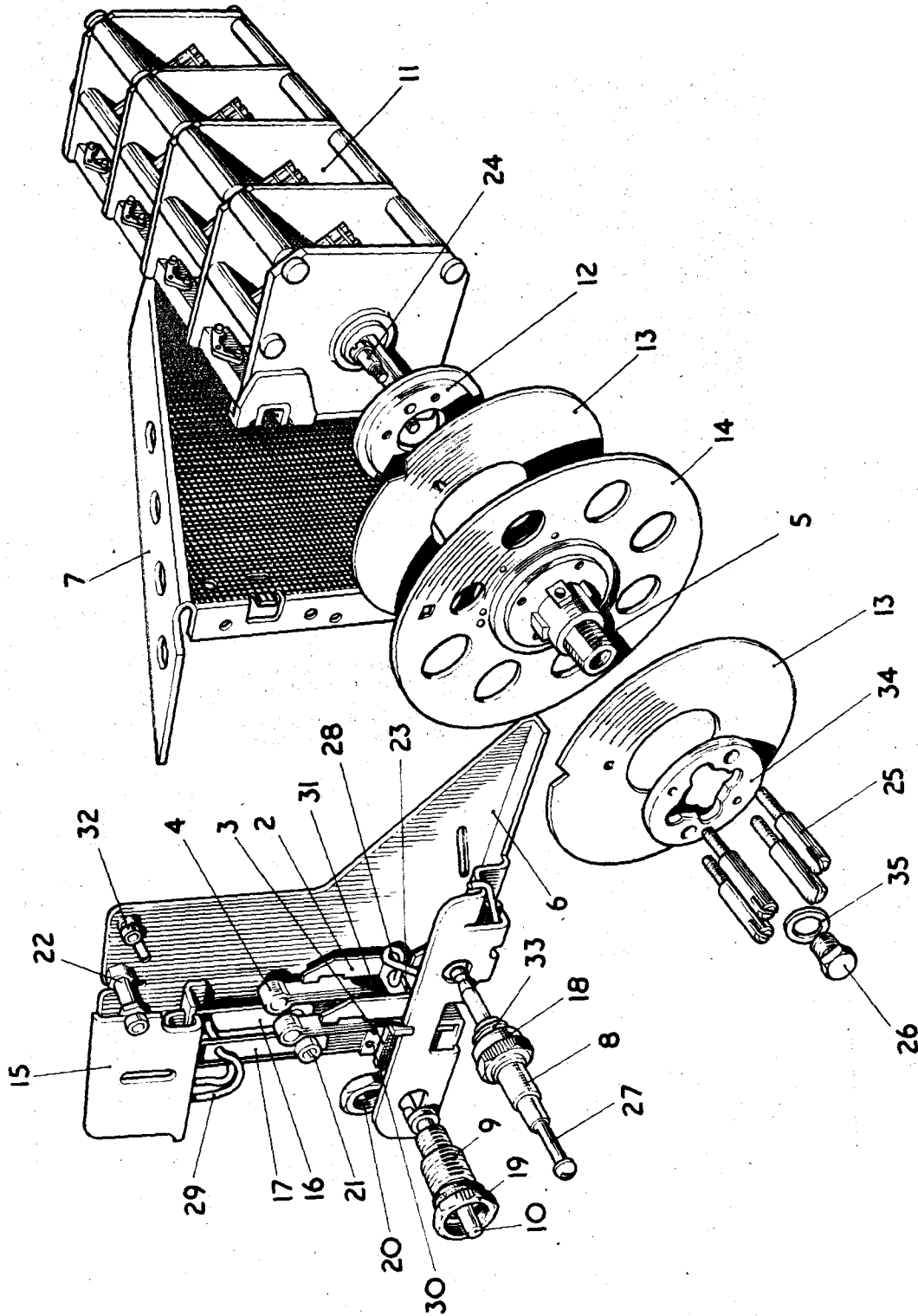
APPENDIX

Note 1 Parts which have been provided for normal maintenance, and are held in Ordnance Stores for issue, are marked %.

Demands for any other part must be endorsed certifying reason for demand, i.e., "To replace broken part or worn out part etc."

G

G

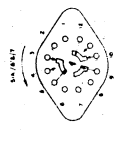
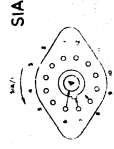
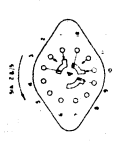
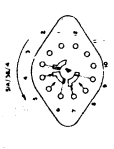
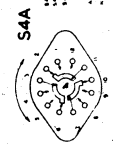
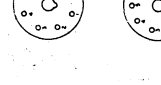
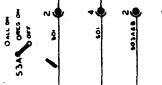
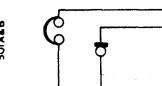
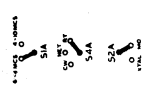
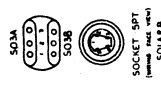
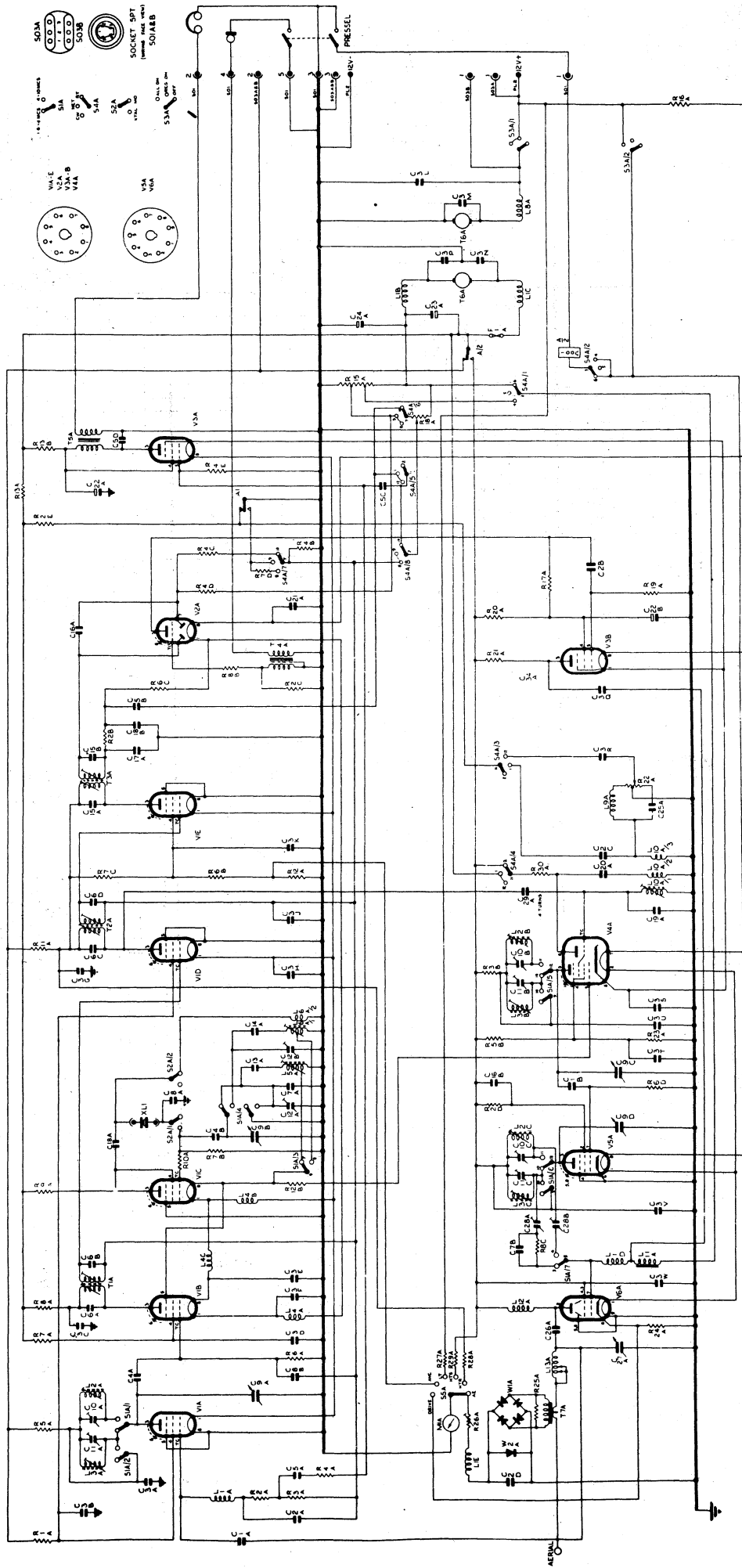


UNITS CONDENSER AND DRIVE No.9.

FOR:- UNITS CONDENSER AND DRIVE, No.9

Page 1 of 1

ITEM No.	%	HOLDING SECTION AND CATALOGUE No.	DESIGNATION	ILLUS. No.	SCH REF.	No. OFF
1	%	Z1/ZA.30066	UNITS, condenser and drive No.9	83221	Diag. 4662/II	
			INCLUDES			
2		Z1/ZA.36599	ARMS, flick, control, No.3	G2	-	1
3		Z1/ZA.36601	ARMS, flick, control, No.4	G3	-	1
4		Z1/ZA.36491	ARMS, flick, locating, No.3	G4	-	2
5		Z1/ZA.36490	BOSSES, No.1, UNITS, condenser and drive, No.9	G5	-	1
6		Z1/ZA.36610	BRACKETS, metal, 4.3/8-in. x 5.5/16-in. x 29/32-in., No.1	G6	-	1
7		Z1/ZA.36611	BRACKETS, metal, 8.5/16-in. x 4.5/16-in. x 1.3/4-in., No.1	G7	-	1
8		Z1/ZA.36479	BUSHES, bearing, No.19	G8	-	1
9		Z1/ZA.36485	BUSHES, bearing, No.20	G9	-	1
10		Z1/ZA.36480	CAMS, metal, No.4	G10	-	1
11		Z1/ZA.36339	CAPACITORS, variable, 4-gang, 545-pF., max., No.1	G11	O9	1
12		Z1/ZA.36604	DISCS, metal, 5/8-in. I.D. x 1.3/8-in. O.D., No.1	G12	-	1
13		Z1/ZA.36470	DISCS, metal, 1.189-in. I.D. x 3.1/2-in. O.D., No.2	G13	-	2
14		Z1/ZA.36488	DISCS, steel, 1.3/8-in. I.D. x 4.5/16-in. O.D., No.1	G14	-	1
15		Z1/ZA.36486	GUIDES, flick arm, No.1	G15	-	1
16		Z1/ZA.36595	INDICATORS, flick, No.2	G16	-	1
17		Z1/ZA.36609	INDICATORS, flick, No.3	G17	-	1
18		Z1/ZA.30251	NUTS, brass, special, 3/4-in. x 26 t.p.i., No.1	G18	-	1
19	%	Z1/ZA.30252	NUTS, brass, special, 3/4-in. x 26 t.p.i., No.2	G19	-	1
20	%	Z1/ZA.36478	NUTS, special, 3/8-in. x 26 t.p.i., Whit. Form, brass, hex., No.1	G20	-	1
21		Z1/ZA.36608	PILLARS, metal, 3/8-in. dia., x 23/32-in., No.1	G21	-	1
22		Z1/ZA.36596	PILLARS, metal, 3/8-in. A/F. x 27/32-in., No.1	G22	-	1
23		Z1/ZA.36600	PLATES, metal, 25/32-in. x 23/32-in., No.1	G23	-	1
24		Z1/ZA.36606	SCREWS, special, B.A., steel, oh.hd., No.6 x 7/16-in., No.1	G24	-	2
25		Z1/ZA.36472	SCREWS, special, B.A., steel, shouldered, No.4 x 1.3/4-in., No.2	G25	-	4
26		Z1/ZA.14562	SCREWS, special, Whit., brass, hexagon head, 5/16-in. dia. x 3/8-in., 26 t.p.i., No.1	G26	-	1
27		Z1/ZA.36481	SPINDLES, steel, 3/16-in. x 2.1/4-in., No.1	G27	-	1
28		Z1/ZA.36471	SPRINGS, special, 18 S.W.G., No.1	G28	-	1
29		Z1/ZA.36484	SPRINGS, special, 24 S.W.G., No.1	G29	-	2
30		Z1/ZA.36487	SPRINGS, special, 26 S.W.G., No.1	G30	-	1
31		Z1/ZA.36598	SPRINGS, special, 36 S.W.G., No.1	G31	-	1
32		Z1/ZA.36597	STOPS, condenser, drive, No.2	G32	-	2
33	%	Z1/ZA.30185	WASHERS, fibre, 3/4-in. dia. x 1/2-in. bore, No.1	G33	-	2
34		Z1/ZA.36605	WASHERS, special, brass, 21/32-in. I.D. x 1.3/8-in. O.D., No.1	G34	-	1
35		Z1/ZA.14327	WASHERS, steel, 5/16-in., special, No.1	G35	-	1
14A	%	Z1/ZA 38316	Flick Mechanism broken away. No.1 (includes items 2-4, 6-10, 15, 23 & 27-33)	G		1
			<u>APPENDIX</u>			
			Note 1. Parts which have been provided for normal maintenance, and are held in Ordnance Stores for issue are marked %.			
			Demands for any other part must be endorsed, certifying reason for demand, i.e., "To replace broken part or worn out part, etc."			
20		Z5/ZA 25715	Nuts brass special 26 tpi No1	G20	-	1

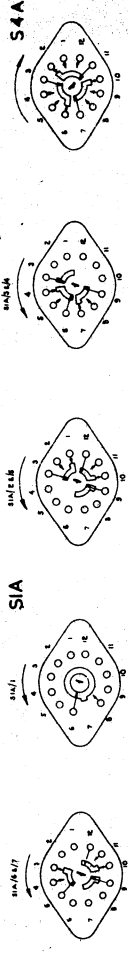
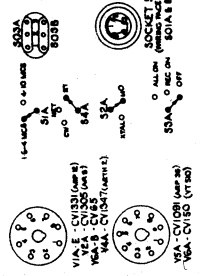
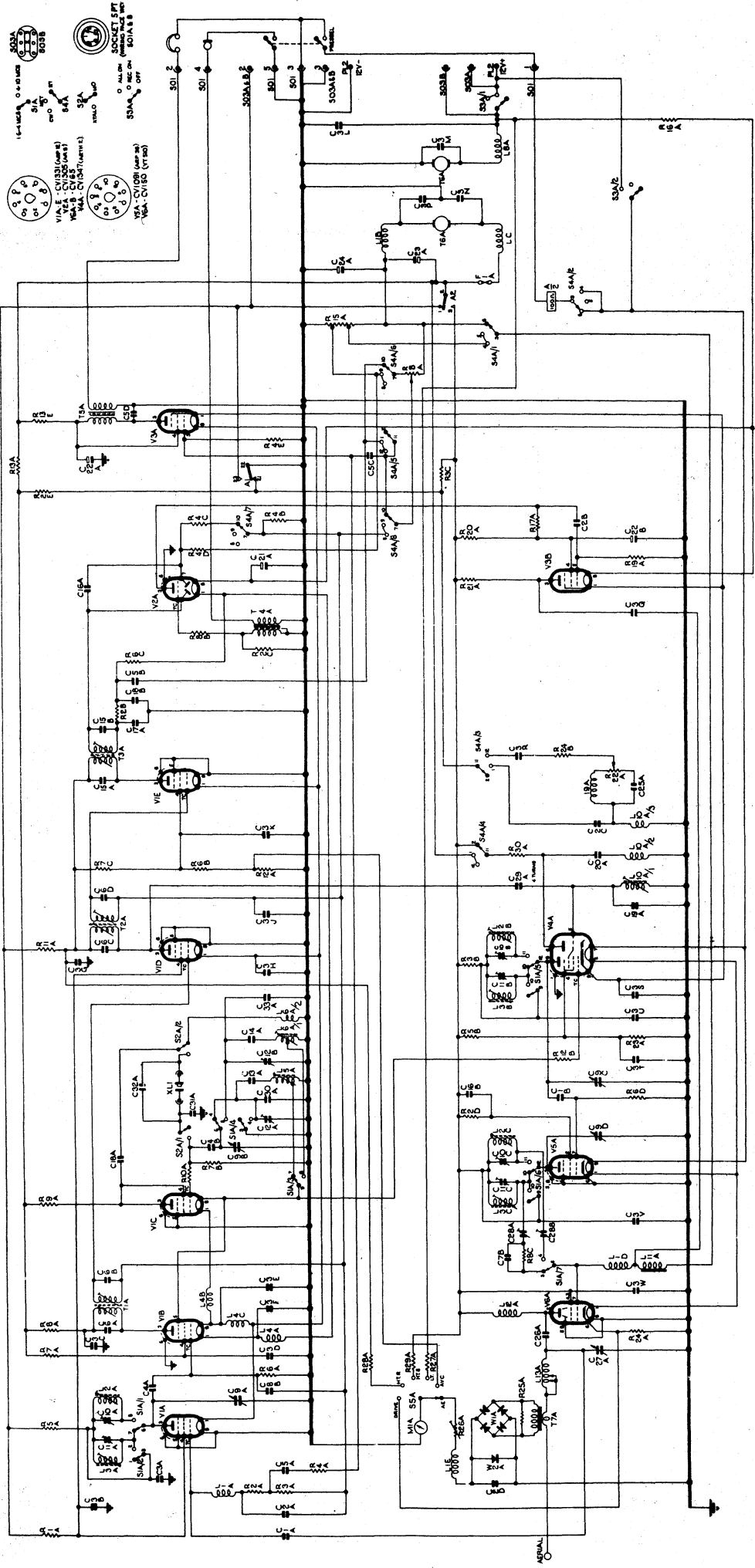


READ INSTRUCTIONS ON FRONT PANEL
 BEFORE SETTING UP THIS SET
 ALL WATERS LABELED WITH THIS
 MARK IN PRODUCTION SHOWN ON CIRCUIT

S-624-R

WIRELESS SET No. 62, MK I.

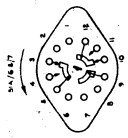
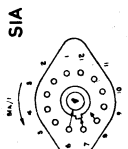
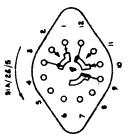
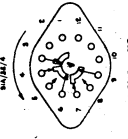
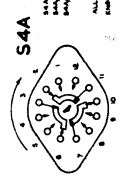
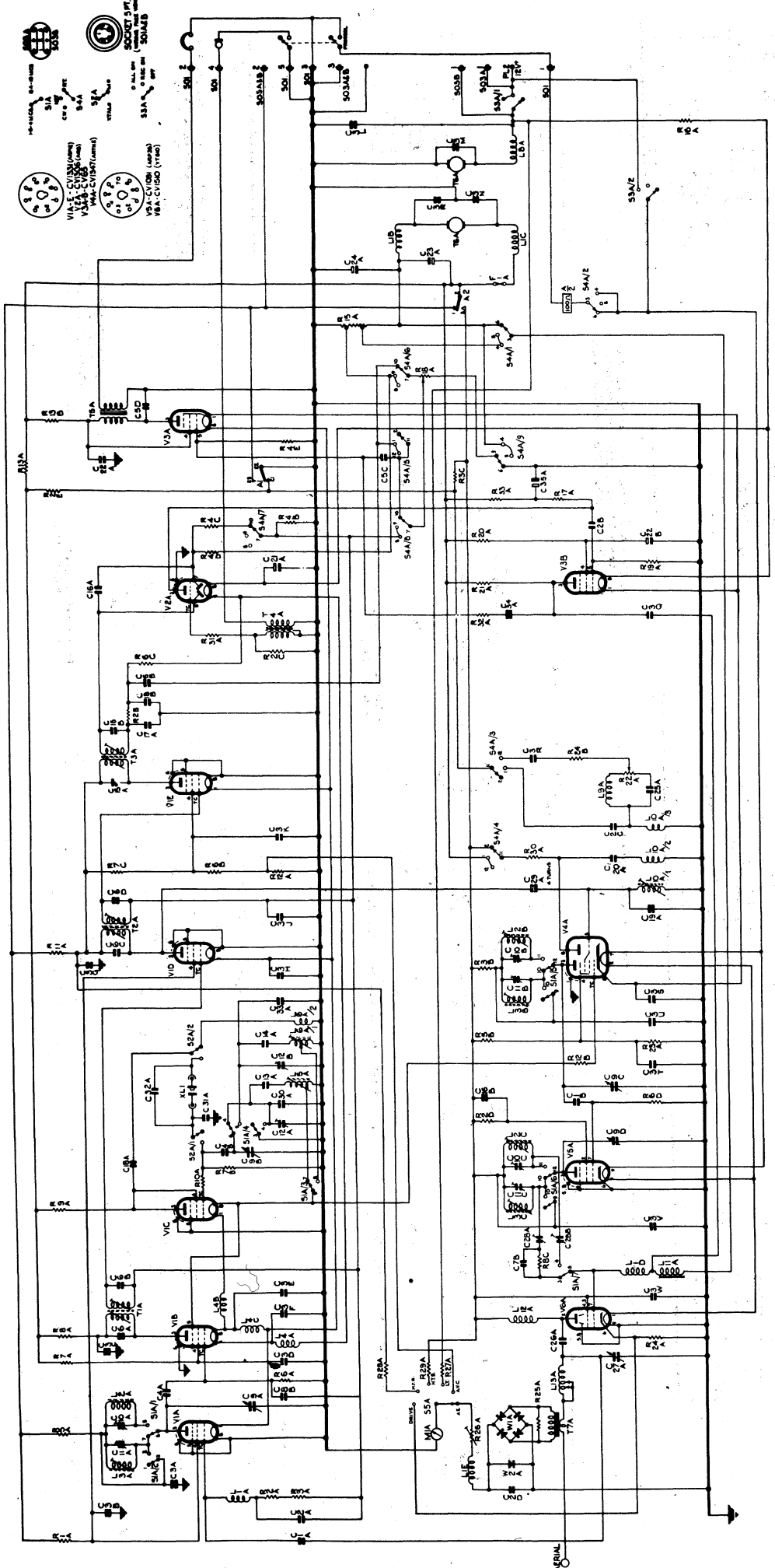
MKI



WIRELESS SET NO. 62 MK. 2
 ALL WATERS REVERSED FROM REAR
 REAR IN POSITION SHOWN ON CIRCUIT.

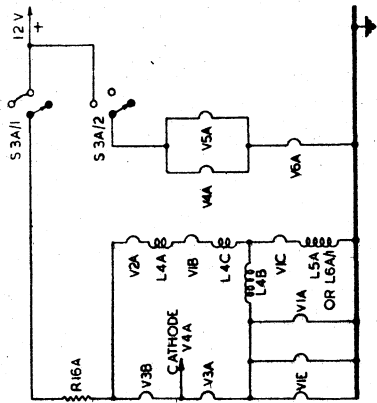
WIRELESS SET NO. 62 MK. 2

MK II

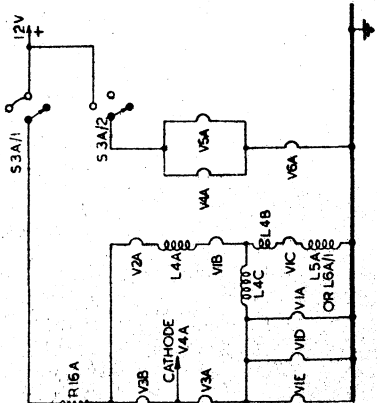


WIRELESS SET NO.62 MK.3

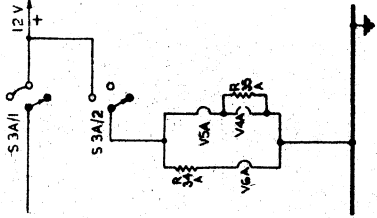
MK III



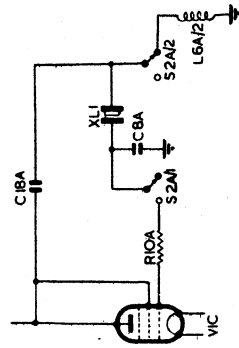
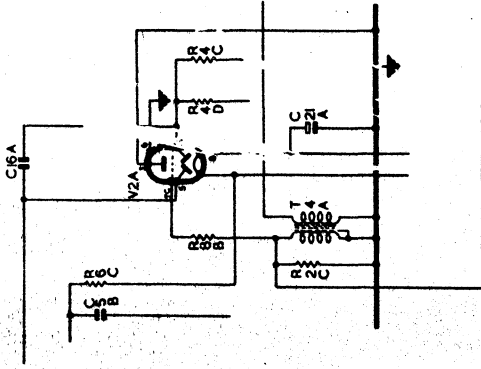
FLAMENT CIRCUIT W.S. 62 MK.I. SN. 1-1000.



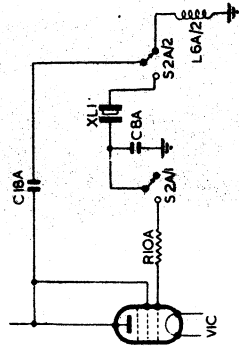
FLAMENT CIRCUIT W.S. 62 MK.I. SN. 1001 UPWARDS



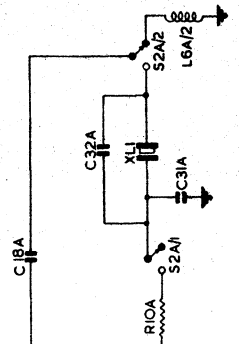
ALTERATION IN FLAMENT CIRCUIT TO V4A, V5A, AND V6A WHEN MODIFICATION INSTRUCTION N57 CARRIED OUT TO EITHER W.S. 62 MK.I. MK.2. OR MK.3.



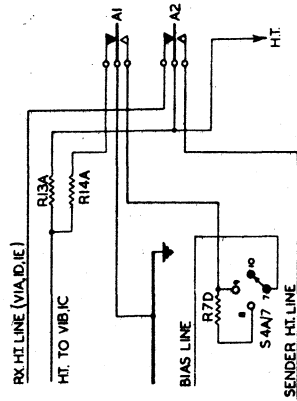
CRYSTAL-M. OSC. W.S. 62 MK.I. SN. 1-1000



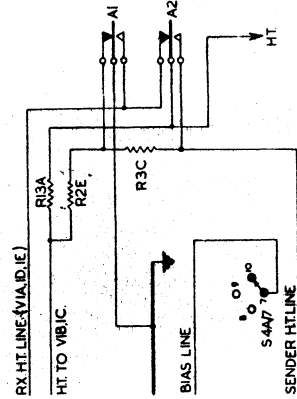
CRYSTAL-M. OSC. W.S. 62 MK.I. SN. 1001-1900



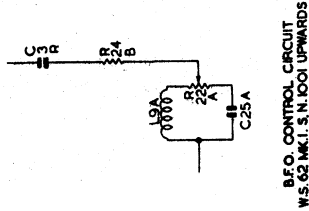
CRYSTAL-M. OSC. SWITCH W.S. 62 MK.I. SN. 1800 UPWARDS



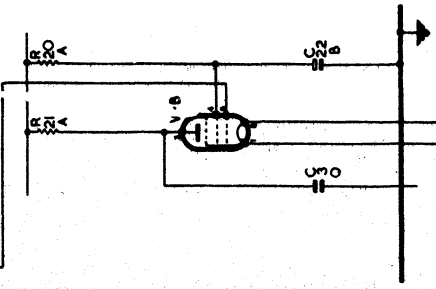
RELAY WIRING W.S. 62 MK.I. SN. 1-1000.



RELAY WIRING W.S. 62 MK.I. SN. 1001 UPWARDS



B.E.O. CONTROL CIRCUIT W.S. 62 MK.I. SN. 1001 UPWARDS



ALTERATION IN CIRCUIT TO V2A AND V3B WHEN MODIFICATION INSTRUCTION N56 CARRIED OUT TO EITHER W.S. 62 MK.I. OR MK.2.

W.S. 62 MK.I. SN. 1800 UPWARDS LOCAL OSCILLATOR CIRCUIT MODIFIED C7A CHANGED TO C30A AND C33A ADDED IN PARALLEL WITH C12 B

RESTRICTED

RESTRICTED